

The Health Summit at Sundance 2023



Reset • Recharge • Reimagine



Welcome

As we gather once again amid a stunning mountain landscape, we are looking forward to continuing the tradition of sharing ideas, learning from one another's experiences, and renewing our motivation to find better ways to collectively improve health.

This year we will challenge ourselves to reimagine the status quo by reconsidering the ways in which we can work with each other and with entities health care has traditionally considered "outsiders," like engaged employers, retail/grocers, a wide range of tech and start-ups. We will discuss the power of redesigning our health systems through partnerships, and consider how we can build more innovative, comprehensive, and resilient systems. As always, the sessions will be in a closed format so that participants can speak freely.

The 2023 Health Summit at Sundance is made possible by generous donations from a number of sponsors: the American Medical Association, the Jewish Healthcare Foundation, the John A. Hartford Foundation, the Penn Center for Health Incentives & Behavioral Economics, and Delta Air Lines. We are so grateful for the support!

Thank you all for your enthusiasm and participation. Here's to a memorable and transformative Health Summit - Take 6!

Best,
Vivian & Danielle



Arrival & Contact Information

Sundance Mountain Resort

8841 N. Alpine Loop Road
Sundance, Utah 84604
(800) 892-1600

The hotel is ~1 hour from the airport by car.
Uber/Lyft and rental cars are easily picked up at the airport
Consider scheduling a ride in advance back to the airport from Sundance
Haroon transportation is an upscale, reliable option

The Health Summit begins Sunday, June 25 @ 5:30 pm and adjourns
Wednesday, June 28 @ 10:45 am

Meetings & Meals will all take place in the Redford Conference Center

Event Contact:

Danielle Sample
dcsamp@gmail.com
801-557-7872



Additional Details

A personalized gift bag will be placed in your hotel room. If you switch rooms upon check-in, please alert the staff that your gift bag needs to be relocated with you.

Attire is casual! Relaxed, activewear is most common during the day + at evening sessions and dinners. Wear what makes you comfortable.

Bring layers, sunscreen, and be sure to hydrate! The resort base elevation is ~6,000 ft. Dinners will be hosted outside, weather permitting.

Guests and families are welcome and encouraged to join all of the dinners and dinner sessions (including the first night!) . Please check with Summit organizers before inviting any guests to the meeting sessions.

There are several [outdoor summer](#) activities as well as [indoor](#) activities and [self care](#) options available on and near the Sundance Resort property to be enjoyed during meeting breaks. While attendees are responsible for making their own arrangements, we are happy to connect folks with similar interests and ensure groups are able to enjoy activities together - let us know what you might be interested in!



Agenda

Meetings & Meals will all take place in the [Redford Conference Center](#)

Sunday, June 25 (Families welcome!)	
5:30 pm	Reception
6:00 pm	Dinner
6:30 pm	Welcome: Vivian Lee
	Evening Presentation: Transforming Health & Wellness at Delta Air Lines Henry Ting & Nilay Shah
Monday, June 26 : Redesigning Health through Partnerships	
Morning Session: Industry Partnerships: From Competition to Coproduction	
7:00 am	Breakfast available - Redford Room
7:30 - 8:15 am	Head, Heart, Hope, Fear Exercise Vindell Washington & Danielle Sample
8:15 - 8:30 am	What's the problem in health care you most fervently hope we will solve in your lifetime? Vivian Lee
8:30 - 9:15 am	From Competition to Cooperation to Coproduction - A Framework
	Retailers in Health & Food as Pharmacy: Vivian Lee & Kevin Volpp Meaningful Partnerships & Coproduction: John Brownstein & Patrik Sundberg



9:15 - 9:30 am	Break
9:30 - 10:10 am	Tabletop Problem-Solving Exercise: Who has the capabilities that complement healthcare to get this done?
10:10 - 11:00 am	Report out: Evaluation and Assessment Moderator: <u>Shivan Mehta</u>
11:00 am - 2:45 pm Free Time & Activities	
*Meet back at the Redford Center at 11:30 am to connect for impromptu activities! (Lunch, Hike, Scenic lift ride to lunch, etc.)	
Afternoon Session: The Start-Up Showcase	
2:45 pm	Snacks Available
3:00 - 3:50 pm	Making a Digital Health Start-Up Balanced Scorecard: Our Wishlist Team Equity: <u>LaQuandra Nesbitt</u> & <u>Joe Betancourt</u> Team Usability: <u>Reshma Gupta</u> & <u>Nina Singh</u> Team Financial: <u>David Browdy</u> & <u>Pamela Peele</u> Team Safety: <u>Karen Feinstein</u> & <u>Linda Mantia</u>
3:50 - 4:00 pm	Break
4:00 - 6:00 pm	The Start-Up Showcase Moderators: <u>Danielle Martin</u> & <u>Clyde Yancy</u>



(The Start-up Showcase Continued)

Presenters:

Queenstown (Singapore): [John Wong](#)

Onduo: [Vindell Washington](#)

Nuance: [Reid Conant](#)

Third Way Health: [Royce Cheng](#)

Crossover: [Scott Shreeve](#)

Harbor Health: [Clay Johnston](#)

Evening Session (Families welcome!)

6:00 pm

Dinner

6:30 pm

Evening Presentation:

Generative AI: Promise and Peril

[Reid Conant](#), [Patrik Sundberg](#)

[Carolyn Clancy](#), moderator

Tuesday, June 27: Redesigning for Resilience: Never Waste a Crisis

Morning Session: Redesigning For Resilience: Infrastructure

7:00 am

Breakfast available

7:30 - 8:00 am

Changing our Minds

[Mark Schuster](#) & [Danielle Sample](#)

8:00 - 8:50 am

Lessons from the Front Lines of Crisis and Resilience

“Hurricanes and Heat and Floods, oh my!”

[Carrie Byington](#) & [Reshma Gupta](#)

Related reading:

[Hospital Preparedness, Mitigation, and Response to Hurricane Harvey in Harris County, Texas](#) (Hines & Reid 2021)



(Related reading continued)
[Ransomware Attack Associated With Disruptions at Adjacent Emergency Departments in the US](#)
(Dameff, Tully, Chan et al. 2023)

8:50 - 9:00 am Break

9:00 - 10:00 am Keeping the Lights on: Designing facilities for Resilience
[Bob Biggio](#) & [Emily Hough](#)
[Kathy Regan](#), moderator

10:00 - 11:00 am Infrastructure part 2: Keeping the information (data) flowing: How information systems help us weather the storm
[John Brownstein](#), [Jon White](#), [Peter Margolis](#)
[Pamela Peele](#), moderator

11:00 am - 3:45 pm Free Time & Activities

*Meet back at the Redford Center at 11:30 am to connect for impromptu activities! (Lunch, Hike, Scenic lift ride to lunch, etc.)

Afternoon Session: Redesigning For Resilience: People & Processes

3:45 pm Snacks Available

4:00 - 5:00 pm Resilience in Practice: Caring for People and Communities
[Monica Bharel](#) & [Chris Sinsky](#)
[Danielle Martin](#), moderator

Related Reading:
[Radical Reorientation of the US Health Care System Around Relationships](#) (Sinsky, Shanafelt & Ristow 2022)



	(Related Reading continued) Humans as an Essential Source of Safety: A Frameshift for System Resilience (Farley, Harry Sinsky et al. 2023)
5:00 - 5:10 pm	Group photo
5:10 - 6:10 pm	Reimagining the Workforce for a More Resilient Future [A Design Exercise] Terry Fulmer , Khay Guan Yeoh , Stacey Chang & Nina Singh
Evening Session (Families welcome!)	
6:15 pm	Dinner & Live Music!
Wednesday, June 28: The New Hybrid World and Workforce	
7:30 am	Breakfast available
8:00 - 9:15 am	Lessons learned, Scars earned: Working with a Virtual/hybrid workforce Carolyn Clancy & Heidi Wald
9:30 - 10:30 am	Show & Tell: Bring your favorite collaborative/hybrid work tools: Patrik Sundberg , Royce Cheng , Nina Singh
10:30 - 10:45 am	Closing Thoughts & Debrief Vivian Lee
	[Adjourn]



Attendees





Joseph Betancourt

Joseph R. Betancourt, M.D., M.P.H., is president of the Commonwealth Fund. One of the nation's preeminent leaders in health care, equity, quality, and community health, Betancourt formerly served as senior vice president for Equity and Community Health at Massachusetts General Hospital (MGH), overseeing the Center for Diversity and Inclusion, Disparities Solutions Center, Center for Community Health Improvement, and centers focused on gun violence prevention, community health innovation, immigrant health, and global health. Previously, Betancourt led the Mass General Brigham (MGB) system's COVID Equity and Community Health response and served as Vice President and Chief Equity and Inclusion Officer at MGH. As founding director of MGH's Disparities Solutions Center, Betancourt partnered with health care organizations to improve quality, address disparities, and achieve equity. The center's Disparities Leadership Program helped guide more than 350 operating health care systems to improve quality and value in the care of diverse, minority, and vulnerable populations. An author of nearly 80 peer-reviewed articles, Betancourt has served on several Institute of Medicine committees, including the committee that produced the seminal report *Unequal Treatment: Confronting Racial/Ethnic Disparities in Health Care*. He is an associate professor of medicine at Harvard Medical School and a board-certified internist, focusing on Spanish-speaking and minority populations. He earned his M.D. from the University of Medicine and Dentistry of New Jersey, completed his residency at New York Hospital–Cornell Medical Center, and earned an M.P.H. as one of the first classes in the Commonwealth Fund–Harvard University Fellowship in Minority Health Policy.





Monica Bharel, MD, MPH

Dr. Monica Bharel is a senior public health advisor helping technology companies to solve public health challenges, using the power of data and analytics to drive innovations and advance health opportunity for all. She is currently working at Google, through Advanced Clinical, focused on climate change, behavioral health, and access to care.

Dr. Monica Bharel most recently served as a Senior Advisor to the Mayor of Boston. She was appointed by Mayor Wu to lead the city's response to the humanitarian crisis in the area known as Mass and Cass. She oversaw a public health, equity-led approach focused on individual medical and treatment needs. This transformative process has included offering low threshold housing and shelter options to unsheltered individuals with a focus on building an intermediate and long term plan to address the intersecting issues of homelessness, substance use disorder and mental health. She previously served as Commissioner of the Massachusetts Department of Public Health. Dr. Bharel served as the Commonwealth's chief physician from 2015-2021. She helped lead the state's aggressive response to the opioid crisis and was dedicated to reducing health disparities and developing data-driven, evidence-based solutions for keeping people healthy. Dr. Bharel led the Massachusetts public health response to the COVID-19 pandemic. As Commissioner, Dr. Bharel oversaw a public health workforce of nearly 3000 and an expansive department addressing issues, from environmental health to injury prevention to infectious diseases. Under her leadership, Massachusetts ranked nationally as among the healthiest states in the nation. Dr. Bharel is a board-certified internist who has practiced general internal medicine for more than 20 years, including at Massachusetts General Hospital, Boston Medical Center, neighborhood health centers, the Veterans Administration and nonprofit organizations. She has served on the faculty of Harvard Medical School, Boston University Medical School, and Harvard School of Public Health, and has been recognized for her dedication to underserved and vulnerable populations. Prior to becoming Commissioner, she was Chief Medical Officer of Boston Health Care for the Homeless.



She holds a Master of Public Health degree through the Commonwealth Fund/Harvard University Fellowship in Minority Health Policy. She holds a medical degree from Boston University School of Medicine and completed a residency and chief residency in internal medicine at Boston City Hospital/Boston Medical Center.



Bob Biggio

Bob is the SVP, Chief Sustainability & Real Estate Officer at Boston Medical Center Health System and has been there since 2011. He directly oversees Facilities, Support Services, Public Safety, Supply Chain, Real Estate, and Design/Construction. Within this role he is working to help make Boston Medical Center the most efficient academic medical center in all of New England. He was the architect of the \$500 million Campus Redesign 1.0 and 2.0 projects which fully modernized BMC's campus. This, coupled with the nation's largest collaborative Solar Power Purchase agreement of diverse buyers, has BMC on pace to be net zero for greenhouse gas emissions from all sources of energy. Bob also championed the successful development of the nation's first net-zero inpatient behavioral health hospital which opened in October 2022. During his time at Boston Medical he was awarded the Norman B Leventhal Environment Award for Excellence in City Building. Also due to his leadership the hospital was awarded the 2014 Energy Project of the Year Award by the National Association of Energy Engineers, New England Chapter. BMC was recognized in both 2017, 2018, 2019, and 2020 as a Practice Greenhealth Top 25 Environmental Excellence Award winner as one of the top 25 hospitals in the country for its distinguished work in pursuing environmental excellence. Also in 2018, Bob received the Visionary Award from Practice Greenhealth in recognition of his extraordinary leadership and innovation in addressing the connections between human health and environmental health and driving sustainable operations. During his tenure at BMC his innovative approach to reengineering the entire physical footprint of the BMC campus, along with the associated utility infrastructure and Supply Chain has produced over \$50 million of annual operating savings during a timeframe in which patient volumes concurrently grew by more than 20%.





David Browdy

David Browdy is responsible for financial strategy and operations; capital structure and investment management; resource allocation; clinical, research, and administrative support models; and working with the board and senior leadership to develop and achieve the vision and strategic plan. He was a principal financial architect of the agreements and structures creating the new Fred Hutchinson Cancer Center in 2022. Fred Hutch, home of three Nobel Laureates, is a world-class clinical and research institution where interdisciplinary teams of world-renowned scientists and humanitarians work together to prevent, diagnose and treat cancer, HIV/AIDS and other diseases. The Center provides outstanding cancer and survivorship care including cutting-edge immunotherapy, cellular therapy, and transplantation with superior outcomes. The Center currently has over \$1.0 billion in net patient service revenues, \$700 million in sponsored research, a \$1.3 billion investment portfolio, an active intellectual property portfolio that has spun off more than thirty companies, and is one of the leading independent research institutions and cancer centers in obtaining National Institutes of Health funding.

From 2013-18, David served as Chief Financial Officer for University of Utah Health and Associate Vice President of Finance for the University of Utah. His responsibilities included strategic financial management, performance and planning for its hospitals and clinics, medical group, health insurance plans, and the medical, nursing, pharmacy, health and dentistry schools. U Health grew from a \$2.3 billion to a \$3.6 billion enterprise during his tenure.

Before joining the University of Utah, David served for 20 years in various capacities at Northwestern University's Feinberg School of Medicine, including Chief Operating Officer and Senior Associate Dean for Administration and Finance. In addition to managing finance and budget for the academic enterprise, his areas of responsibility included information



technology, human resources, communications, and facilities management. David has a Bachelor of Science degree in Biomedical Engineering from Northwestern University and a Master of Science degree in Public and Private Management Policy from Carnegie-Mellon University's Tepper School of Business and Heinz School of Public Policy. He has presented nationally on health care economics and strategic planning at institutions ranging from Harvard Business School to the Association for American Medical Colleges (AAMC). He served for six years on the AAMC Advisory Panel on Research, and in 2016 he received the Distinguished Service Award from the AAMC Group on Institutional Planning.



John Brownstein

John Brownstein, Ph.D is Professor of Biomedical Informatics at Harvard Medical School and is the Chief Innovation Officer of Boston Children's Hospital. He also directs the Computational Epidemiology Lab and the Innovation and Digital Health Accelerator both at Boston Children's. He was trained as an epidemiologist at Yale University. Overall, his work aims to have translation impact on the surveillance, control and prevention of disease. He has been at the forefront of the development and application of data mining and citizen science to public health. His efforts are in use by millions each year including the CDC, WHO, DHS, DOD, HHS, and EU, and has been recognized by the National Library of Congress and the Smithsonian. In addition to research achievements, this translational impact comes from playing an advisory role to numerous agencies on real-time public health surveillance including HHS, DHS, CDC, IOM, WHO and the White House. He was awarded the Presidential Early Career Award for Scientists and Engineers, the highest honor bestowed by the United States government to outstanding scientists and the Lagrange Prize for international achievements in complexity sciences and an Emmy for his contributions to medical reporting during the covid-19 pandemic. Dr. Brownstein is co-founder of digital health companies Epidemico and Circulation and an ABC Medical News Contributor. He has authored over 300 peer-reviewed articles on epidemiology and public health. This work has been reported on widely including pieces in the New England Journal of Medicine, Science, Nature, New York Times, The Wall Street Journal, CNN, National Public Radio and the BBC.





Carrie Byington

Dr. Byington, as Executive Vice President for University of California Health, leads the University of California's health enterprise, the largest academic health system in the US, and is a professor of pediatrics at the University of California, San Francisco and the University of California, San Diego. Dr. Byington is an academic physician-scientist, with expertise in pediatrics and infectious diseases. In her role as EVP for UCH, she led the system-wide COVID-19 response. As a clinician, she has worked to support health equity and to eliminate health disparities, especially for infants and children. As an educator, she has worked to increase inclusion in the health professional workforce. She has mentored more than 100 students, trainees, and faculty members, the majority from backgrounds under-represented in medicine.





Stacey Chang

Stacey Chang is a designer of new creative solutions to age-old dilemmas in health. He focuses on building complex adaptive systems that can respond to the dynamic challenge of producing health in human society, and currently advises a broad array of efforts seeking to build more sustainable, equitable, and effective models. Prior to founding New Origin Studio, Stacey served as the Founding and Executive Director of the Design Institute for Health at the University of Texas at Austin. The Design Institute was a first-of-its-kind institution, dedicated to creating systemic human-centered solutions in clinical and community contexts. Embedded as an integrated part of an operating health system and a medical education and training program, the Institute considered topics as broad as the design of products and services, the built environment, integration of social and medical interventions, the structure and strategy of national health systems, and new models for societal health at a global scale.

Before his academic tenure, Stacey served as the Managing Director of the Healthcare practice at IDEO, the global design and innovation firm. Clients included governments, research institutions, hospitals, pharma, insurance, medtech, and all the upstarts trying to rewrite the script, in both established and emerging markets.

Stacey presents frequently and is widely published, including in the New England Journal of Medicine, NEJM Catalyst, Harvard Business Review, and Politico. He has served as a TEDMED Editorial Advisory Board member, a Thought Leader for NEJM Catalyst, an Eisenhower Fellow, and an advisor to the Global Delivery arm of the Bill and Melinda Gates Foundation. He holds degrees in engineering from MIT and Stanford.





Royce Cheng

Royce Cheng is the Chief Product Officer at Third Way Health, a tech-enabled services company focused on transforming the patient experience. He leads product design, development, and delivery of Third Way Health’s “front office as a service” platform, making world class automation technology accessible to medical practices of all sizes. Prior to Third Way Health, he led product teams and provider partnerships at Verily, focusing on patient engagement, clinical engagement, and data integration platform offerings for health systems. Royce has also served as the co-lead of the digital health practice at The Chartis Group, applying technology to grow and streamline care operations for health systems throughout the Northeast, Midwest, and South. He started his career building IP and commercializing medical devices at Abbott Diabetes Care and New York Presbyterian. Royce lives in Boston with his wife and two daughters.





Carolyn Clancy

Dr. Clancy serves as the Assistant Under Secretary for Health (AUSH) for Discovery, Education & Affiliate Networks (DEAN), Veterans Health Administration (VHA), effective July 22, 2018. The Office of the DEAN fosters collaboration and knowledge transfer with facility-based educators, researchers and clinicians within VA, and between VA and its affiliates. Prior to her current position, she served as the Acting Deputy Secretary of the Department of Veterans Affairs, the second-largest Cabinet department, with a \$246 billion budget and over 424,000 employees serving in VA medical centers, clinics, benefits offices, and national cemeteries, overseeing the development and implementation of enterprise-wide policies, programs, activities and special interests. She also served as the VHA Executive in Charge, with the authority to perform the functions and duties of the Under Secretary for Health, directing a health care system with a \$68 billion annual budget, overseeing the delivery of care to more than 9 million enrolled Veterans. Previously, she served as the Interim Under Secretary for Health from 2014-2015. Dr. Clancy also served as the VHA AUSH for Organizational Excellence, overseeing VHA's performance, quality, safety, risk management, systems engineering, auditing, oversight, ethics and accreditation programs, as well as ten years as the Director, Agency for Healthcare Research and Quality.

She is a highly experienced and nationally recognized physician executive. Dr. Clancy is a general internist and health services researcher, a graduate of Boston College and the University of Massachusetts Medical School. She holds an academic appointment at George Washington University's School of Medicine and serves as Senior Associate Editor, Health Services Research Journal. She has contributed to eight academic textbooks and authored, co-authored and provided invited commentary in more than 225 scholarly journal articles. She served as a member of the National Quality Forum's Board of Directors, Chair of the AQA Alliance and served on the Board of Governors for the Patient-Centered Outcomes Research Institute. She is an elected member of the National Academy of Medicine and was presented with the 2014 Quality Champion Award from the National Committee for Quality Assurance. She was also named as an Honorary Fellow of the American Academy of Nursing and was selected as the 2015 Outstanding Federal Executive of the Year by Disabled American Veterans. In 2018, she was selected as one of the Top 50 Physician Executives by Modern Healthcare, and in 2019, she was identified as one of the 50 Most Influential Clinical Executives by Modern Healthcare. She was also awarded the 2023 Primary Care Collaborative's (PCC) prestigious Barbara Stanfield Award.





Reid Conant

Dr. Reid Conant is a practicing physician, informaticist, innovator, and Chief Medical Information Officer (CMIO) at Nuance Communications, driving technology and process innovation in healthcare. Board-certified in both Emergency Medicine and Clinical Informatics, Dr. Conant is mission-driven to innovate and contribute to the field of clinical informatics through leadership roles in both academic-affiliated clinical practice/informatics as well as leading healthcare AI companies.

After early EHR deployment successes through novel solutions design as CMIO and clinical informaticist, Dr. Conant founded Conant and Associates, Inc. (CAI) in 2007 and he and his growing team consulted for local and regional hospitals, focusing on optimizing ED Information Systems and CPOE Systems through the “Meaningful Use” era. His strategic focus on physician documentation and speech recognition led to a partnership with Nuance Communications in 2009, resulting in the development of strategies and deliverables and the founding of the Nuance Professional Services group. Dr. Conant expanded the CAI Services team and created software tools that have since been integrated into Nuance’s Dragon Medical speech recognition and ambient clinical intelligence technologies. In 2014, he and his team joined Nuance through acquisition, with Dr. Conant assuming the role of CMIO at Nuance (now a Microsoft company).

Throughout his career to date, Dr. Conant often played key roles in the development and deployment of AI-based technologies, including Computer Assisted Physician Documentation (CAPD), cloud-based speech recognition, virtual scribe solutions, Clinical Decision Support Systems (CDSS), Virtual Assistant (VA), Ambient Clinical Intelligence (ACI), and most recently the exploratory application of Artificial Generalized Intelligence (AGI) and Generative AI (GAI) to clinical medicine.

Dr. Conant enjoys striving for collaborative innovation and successes, as a leader of team initiatives across strategy, design/development, QA, sales, and deployment stages. He is an experienced presenter at EHR user group meetings, industry association gatherings, C-level forums, and client-centric events. Most recently, as the lead clinical architect for integrating generative AI (GPT-4) into Nuance’s Dragon Medical technologies, Dr. Conant strongly believes generative AI has the potential to broaden patient access to care, and to greatly improve the quality of patient care. He envisions responsible advances in care through the confluence of EHR data, real-time conversational and patient-generated data, and generative AI acting as a co-pilot of sorts, ultimately leveling many aspects of the field for providers, payors, and patients. Dr. Conant believes this pending transformative influence could not come at a better time, as he knows first-hand that healthcare faces many grave challenges, including low patient/provider satisfaction rates, provider burnout, workforce shortages, regulatory constraints, and highly stressful practice environments. Dr. Conant is excited about the potential impact AI will have on care delivery, as we have only scratched the surface in this area of healthcare technology innovation. He anticipates a promising future where responsible AI continues to revolutionize healthcare.





Karen Feinstein

Dr. Feinstein is President and Chief Executive Officer of the Jewish Healthcare Foundation (JHF) and its three operating arms, the Pittsburgh Regional Health Initiative (PRHI), Health Careers Futures (HCF), and the Women's Health Activist Movement Global (WHAMglobal). Combined, they perform a unique mix of grantmaking, research, teaching, coaching, and project management in order to serve as a regional catalyst for health care reforms.

Dr. Feinstein's publications and presentations focus on healthcare quality improvement, patient safety, long-term care, women's health, and the healthcare workforce, and she frequently presents at national and international conferences. She was a presenter at the 2016 TEDxBeaconStreet event, and she is the host of a new podcast series, Up Next for Patient Safety, examining the best solutions to healthcare safety challenges. She has served on the faculties of Boston College and Carnegie Mellon University and taught at the University of Pittsburgh.

Dr. Feinstein is a founder of the Network for Regional Health Improvement, a past President of Grantmakers In Health and Grantmakers of Western PA, and founder of the Pennsylvania Health Funders Collaborative. She serves on many boards, including the Commonwealth of Pennsylvania Health Research Advisory Committee, Board of Visitors of the University of Pittsburgh's Graduate School of Public Health, the Highmark Health Quality, Safety & Value Board, UPMC Presbyterian/Shadyside Board of Directors, and the UPMC System-wide Patient Care Committee. She is a founding member of the national Women of Impact coalition and a member of the International Women's Forum (IWF) where she was the first chair of Pittsburgh's IWF chapter and co-founded their Women in Health Care Special Interest Group.

Dr. Feinstein earned her bachelor's degree in American History at Brown University, her Master of Social Planning at Boston College, and her doctorate at the Heller School for Social Policy and Management at Brandeis University. She has Honorary Doctorates from Chatham and Carlow Universities.





Terry Fulmer

Terry Fulmer, PhD, RN, FAAN, is President of The John A. Hartford Foundation in New York City, a foundation dedicated to improving the care of older adults. She serves as the chief strategist for the Foundation and her vision for better care of older adults is catalyzing the Age-Friendly Health Systems social movement. She is an elected member of the National Academy of Medicine and served on the independent Coronavirus Commission for Safety and Quality in Nursing Homes. She previously served as Distinguished Professor and Dean of Health Sciences at Northeastern University and Founding Dean of the New York University College of Nursing. Dr. Fulmer is nationally and internationally recognized as a leading expert in geriatrics and is also known for conceptualization and development of the national NICHE program and research on the topic of elder abuse and neglect. She is the first nurse to have served on the board of the American Geriatrics Society. She is also the first nurse to have served as President of the Gerontological Society of America, which awarded her the 2019 Donald P. Kent Award for exemplifying the highest standards for professional leadership in the field of aging.





Reshma Gupta

Dr. Reshma Gupta, MD, MSHPM is a practicing internist and a creative physician-executive who has led national efforts improving healthcare affordability and population health. Her work has focused on policy and alternative payment models, operational strategy, and health system redesign to improve the delivery of more affordable care to patients. She has worked as a senior adviser with the Center for Medicare and Medicaid Innovations' Comprehensive Primary Care program and Affordability strategic pillar and currently advises the U.S. Department of Defense committee on Health Delivery Systems. Dr. Gupta serves as a senior advisor of Costs of Care where she created the first Affordability Accelerator to identify interventions lowering patient out-of-pocket costs and a learning community of health system managers and educators. Her research created the first High Value Care Culture Survey, evaluated drivers of value-based decision making in medical centers across California, and evaluated interventions to reduce expenditures for high-cost conditions. She also consults for national organizations including the Kaiser Permanente MacColl Center for Health Care Innovation.

Dr. Gupta is currently the Chief of Population Health and Accountable Care at the University of California Davis Health and the Population Health Strategy Team across all UC Health campuses. Her teams have launched over twenty population health programs including multiple initiatives across all UC campuses. She was recognized as a distinguished leader of the California Health Care Foundation, Presidential Leadership Scholars program, and Becker's Hospital Review as a Top Executive Population Health Leader. Dr. Gupta has led over a hundred care team members in affordability improvement initiatives, value analytics, and population health through her current and previous role as the Medical Director for Quality and Value at UCLA.





Emily Hough

Emily is currently a Senior Fellow at Brown School of Public Health with a focus on healthcare and climate change. In 2021-22 Emily was a Commonwealth Fund U.K. Harkness Fellow in Health Care Policy and Practice where she looked at how U.S. health systems are working to improve community health.

Prior to her Harkness Fellowship she was Director of Strategy at NHS England, where she led a team that helped solve some of the most complex problems facing the English healthcare system. She contributed to the development of the NHS Long Term Plan and the NHS Five Year Forward View, the most recent national strategies for the future of healthcare in England. She has overseen the delivery of national programs looking at how the NHS can play a greater role in improving the wider social determinants of health, including NHS Healthy New Towns, Health and Work and the Greener NHS program. Additionally, she established the program to develop the “NHS as an anchor institution,” working in partnership with the Health Foundation to consider how healthcare can create social value in local communities.

Emily’s wider experience includes supporting provider collaboration, advising the first NHS Trust Special Administrator and supporting the implementation of a major service reconfiguration in North Central London. She began her career as a management consultant, having studied Psychology at the University of Edinburgh.





Clay Johnston

Clay Johnston is the Co-Founder and Chief Medical Officer of Harbor Health, a new vertically integrated health delivery system, and Adjunct Professor of Neurology at the University of California, San Francisco. From 2014 to 2021, he was the inaugural Dean of the Dell Medical School at The University of Texas at Austin. Clay is also a Neurologist and epidemiologist, specializing in stroke care and research. He was formerly at the University of California, San Francisco where he served as Associate Vice Chancellor of Research and founding director of the Center for Healthcare Value. Clay is a graduate of Amherst College, completed medical school at Harvard University and received a PhD in epidemiology from the University of California, Berkeley. He is a member of the National Academy of Medicine.





Vivian Lee

Vivian S. Lee, M.D., Ph.D., M.B.A., is a physician executive and author of [The Long Fix: Solving America's Health Care Crisis with Strategies that Work for Everyone](#). An Executive Fellow at Harvard Business School and Senior Lecturer at Harvard Medical School, she focuses on resilience and the intersection of tech, climate change, and healthcare. Lee served as the founding President of Health Platforms at Alphabet's Verily, where she helped build multiple successful start-ups, including virtual disease management, precision risk insurance, and a pandemic management company. Prior to Verily, Lee was Dean of the medical school and CEO of the University of Utah Health, a \$3.6B system, which was ranked #1 in quality among university health systems (Vizient). Dr. Lee is a *magna cum laude* graduate of Harvard, received a D.Phil in medical engineering from Oxford as a Rhodes Scholar, earned her M.D. with honors from Harvard, and her MBA from NYU. Elected to the National Academy of Medicine, Lee serves on the Board of Directors of the Commonwealth Fund, Boston Children's Hospital, and Zions Bancorporation. She was named one of the 100 Most Influential People by Modern Healthcare in 2022 for the third consecutive year and has been featured in the New York Times, NPR, Bloomberg News, NBC Nightly News, Hidden Brain podcast, Crain's 40 under 40, among others.





Linda Mantia

Linda was Senior Executive Vice President and Chief Operating Officer of Manulife Financial Corporation, an international insurance and financial services company from 2016-2019. Previously, she was Executive Vice President of Digital Banking, Payments and Cards at Royal Bank of Canada, a multinational financial services company in addition to other leadership roles, from 2003 to 2016. Prior to that, Linda worked at McKinsey & Company and practised law at Davies Ward Phillips & Vineberg LLP.

Currently, Linda is a public company Director of McKesson Corporation, a NYSE listed diversified healthcare services leader where she is Chair of the Compensation and Talent Committee and a member of the Governance and Sustainability Committee; a Director of Ceridian HCM Holding Inc., a global human capital management software company, where she serves on the Audit and the Governance Committees; and Director of Maple Leaf Foods, a consumer packaged meats company. Linda also works with non-public companies including as Director of Granular Insurance (a private Verily company) and Chair of Manifest Climate. In the community, she is a Director of Sunnybrook Health Sciences Centre and is Chair of its HR Committee.





Peter Margolis

Peter Margolis, MD, PhD, is Cincinnati Children's Professor of Pediatrics and CoDirector of the James M. Anderson Center for Health System Excellence at Cincinnati Children's Hospital Medical Center.

His work encompasses the application and study of systems improvement methods across a broad range of areas including primary and subspecialty care, communities and public health settings to improve the health outcomes of children, families and communities. Over the last 20 years, he and his research team have developed innovative approaches that engage patients, their families, clinicians, scientists and communities in developing network-based learning health systems that simultaneously improve care, spawn innovation and accelerate research.

This work has repeatedly demonstrated significant impact on the process and outcomes of care. Dr. Margolis was co-PI of an NIH Transformative Research Grant focused on developing learning health systems for children with chronic illness by harnessing the inherent motivation and expertise of all stakeholders involved. Dr. Margolis has extensive experience in large scale comparative effectiveness research, the creation of large scale interoperable data systems, managing large project teams and engaging individuals from diverse backgrounds to co-produce improved care and research.

He served as Chair of the PCORnet Council guiding the Patient Centered Outcomes Research Institute's investment in transforming research infrastructure in the US. The ImproveCareNow Network which he leads was awarded the Drucker Prize, the largest nonprofit management and innovation award in the US. Dr. Margolis is an elected member of the National Academy of Medicine.





Danielle Martin

Dr. Danielle Martin is Professor and Chair of the Department of Family and Community Medicine (DFCM), University of Toronto. DFCM is the largest academic department of family medicine in the world and home to the World Health Organization (WHO) Collaborating Centre on Family Medicine and Primary Care.

Dr. Martin is an active family physician and a respected leader in Canadian medicine. In 2006, her first year in practice, she helped launch Canadian Doctors for Medicare, the voice for Canadian physicians who believe in "a high quality, equitable, sustainable health system built on the best available evidence as the highest expression of Canadians caring for one another". Danielle's policy, clinical and academic expertise, combined with her commitment to health equity, have made her a highly regarded health system leader. She holds a Masters of Public Policy from the School of Public Policy and Governance at the University of Toronto. In March 2014, Dr. Martin's presentation to a United States Senate Subcommittee about the Canadian health care system brought her international acclaim and has been viewed by over 30 million people across the globe. Her national bestselling book 'Better Now: 6 Big Ideas to Improve the Health of all Canadians', was released in 2017 and is used by students and lay people across Canada who want to learn more about Canada's health system.

Dr. Martin spent eight years as a senior hospital executive, most recently as Executive Vice President and Lead Medical Executive at Women's College Hospital (WCH), where she was also medical lead of the hospital's COVID-19 pandemic response. At WCH, she also led the establishment of Women's Virtual, Canada's first virtual hospital.



The recipient of many awards and accolades, in 2019 Dr. Martin became the youngest physician ever to receive the F.N.G. Starr Award, the highest honour available to Canadian Medical Association members.



Shivan Mehta

Dr. Shivan Mehta is Associate Chief Innovation Officer at Penn Medicine and Associate Professor of Medicine and Health Policy at the Perelman School of Medicine. He leads a team of managers, designers, and engineers to develop, evaluate, and implement health care delivery innovations across Penn Medicine's health system. Current projects focus on connecting with patients outside of traditional venues through automated hovering and population health outreach. Shivan has led and evaluated over 20 pragmatic trials of health care delivery interventions that leverage behavioral science, care redesign, and information technology to improve population health outcomes in areas such as colorectal cancer screening, hypertension management, breast cancer screening, hepatitis c screening, and vaccine outreach. As a clinical gastroenterologist, Shivan is also Co-Director of Quality for Gastroenterology and Physician Lead for the Colorectal Cancer Strategy group at Penn Medicine.

Shivan received his bachelor's degree in economics from Yale University, his medical degree and master's in health policy research from the University of Pennsylvania, and his MBA in health care management from the Wharton School.





LaQuandra Nesbitt

Dr. LaQuandra S. Nesbitt is a board-certified family physician with over a decade of experience leading population health initiatives in governmental public health agencies. Dr. Nesbitt currently serves as Senior Associate Dean for Population Health Sciences and Health Equity and Bicentennial Endowed Professor of Medicine and Health Sciences at The George Washington University School of Medicine and Health Sciences and is the inaugural Executive Director of the Center for Population Health Sciences and Health Equity.

The GW SMHS Center for Population Health Sciences and Health Equity (CPHSHE) was founded in late 2022 as a premier academic center within the university for applied population health research to address health inequities. CPHSHE provides strategic direction and support to the education, research and clinical programs within the GW academic medical enterprise (GW School of Medicine and Health Sciences, GW Medical Faculty Associates, GW University Hospital, and Cedar Hill Regional Medical Center-GWH) to advance the improvement of population health through a health equity lens.

Dr. Nesbitt most recently served as the Director of the District of Columbia Department of Health in Washington, DC, from January 2015 to July 2022 where she led with a focus on health equity and improving the quality of health programs and healthcare services for all DC residents, working to address the District's most pressing health challenges. As a physician leader, Dr. Nesbitt mobilizes organizations and communities to implement innovative solutions that promote health and wellness, and achieve health equity. Throughout her career she has led multi-sector collaborations to address innovation in healthcare delivery and its impact on high cost, high need and other special populations; the integration of public health and healthcare; and the impact of emerging infectious diseases on population health. Prior to her role in DC, Dr. Nesbitt served as the Director of the Louisville Metro Department of Public Health and Wellness



where she led initiatives focused on Affordable Care Act implementation and violence prevention.



Pamela Peele

Pamela Peele, Ph.D. currently works as a health analytics consultant and faculty at the Katz Graduate School of Business at the University of Pittsburgh. She is the former Chief Analytics Officer at UPMC in Pittsburgh, PA. She served in that role for 15 years and was responsible for creating innovative analytics to drive financial and clinical performance including economic modeling, predictive modeling, statistical analysis and machine learning as well as the vetting of intellectual property in the analytic space around venture capital and startup investments. Prior to that, she was vice chair of Health Policy and Management at the Graduate School of Public Health at the University of Pittsburgh. Prior to her academic career, she ran the neurodiagnostic lab at the Salem VA Hospital in Salem, Va. She is a registered EEG technologist.

She has numerous published articles and book chapters. She was the first person chosen by IBM as an IBM Big Data Hero and her work has been recognized by various professional organizations including being voted a top innovator in healthcare by IT News Men & Women of the Year and recipient of the International Institute of Analytics award for excellence in transforming the use of data analytics within organizations.

Dr. Peele has a BA in economics from Roanoke College in Salem, VA, and a MA and a PhD in economics from Virginia Tech in Blacksburg, VA.

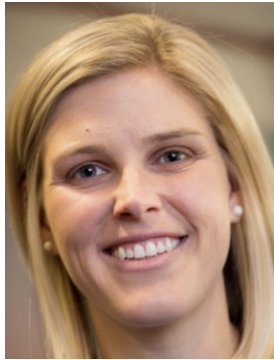




Kathy Regan

Kathleen Regan is the executive vice president and chief operating officer of The Commonwealth Fund. At the Fund, she oversees all finance, investments, and operations. She has been the executive sponsor of the Climate and Health Special Initiative at the Fund. Prior to joining the Commonwealth Fund in 2014, Ms. Regan worked in the private sector for over twenty five years: advising, financing, and helping to build innovative health care companies, with a particular focus in medical device and biopharma companies. She was a senior advisor and operating consultant to Warburg Pincus LLC., a venture partner at Radius Ventures and held senior management roles at Citibank/SunTrust Robinson Humphrey. She served as a senior advisor to the U.S. Department of State Global Health Initiative and led the development of a public–private partnership, Saving Mothers, Giving Life, to address maternal mortality in sub-Saharan Africa during the Obama administration. Ms. Regan currently serves on the board and executive committee of Boston Children’s Hospital. She is a graduate of Princeton University and Columbia University’s Mailman School of Public Health.





Danielle Sample

Danielle Sample served as Chief of Staff to Vivian Lee, the President of Health Platforms at Verily (Alphabet). Before joining Verily, Danielle worked for several years within the University of Utah Health system where she initially focused on managing clinical trials and then shifted to serve as the Director of Administration in the Office of the Senior Vice President for Health Sciences. Danielle was a student athlete at the University of Utah where she received a B.S. in Anthropology and a Master's Degree in Public Health. She was one of the founders of the Health Summit conferences six years ago and serves as the Vice-President of the ROCS Foundation, the organization that manages the Summits.





Mark Schuster

Mark A. Schuster, MD, PhD, is Founding Dean and CEO of the Kaiser Permanente Bernard J. Tyson School of Medicine, a new school in Pasadena, CA. Prior to his appointment, he served as the William Berenberg Professor of Pediatrics at Harvard Medical School and Chief of General Pediatrics and Vice Chair for Health Policy in the Department of Medicine at Boston Children's Hospital.

Dr. Schuster is recognized as a leader in research on child, adolescent, and family health, and has authored over 250 publications and two books. With funding from NIH, CDC, and AHRQ, he has studied topics such as quality of care, racial/ethnic health disparities, family leave, sexual/gender minority health, obesity prevention, and adolescent sexual health.

Dr. Schuster is an elected member of the National Academy of Medicine and has served as president of the Academic Pediatric Association. He is a recipient of the Richardson Award for lifetime achievement from the Society for Pediatric Research, the Barger Excellence in Mentoring Award from Harvard Medical School, and the Joseph St. Geme, Jr., Award for leadership in pediatrics from the Federation of Pediatric Organizations. He received his BA summa cum laude from Yale, his MD from Harvard Medical School, his MPP from the Harvard Kennedy School of Government, and his PhD from the Pardee RAND Graduate School. He completed his pediatric residency at Boston Children's Hospital and his fellowship at the UCLA Robert Wood Johnson Clinical Scholars Program.





Nilay Shah

Nilay Shah is Managing Director in Global Health and Wellbeing at Delta Air Lines and leads Health Analytics, Innovation and Global Benefits. Prior to Delta Air Lines, he was the Chair of the Division of Health Care Delivery Research at Mayo Clinic and a Professor of Health Services Research in the Mayo Clinic College of Medicine. He was also the Robert D. and Patricia E. Kern endowed Director for Research in the Center for the Science of Health Care Delivery at Mayo Clinic. Dr. Shah was previously co-PI of the FDA-funded Yale-Mayo Clinic Center for Excellence in Regulatory Science and Innovation (CERSI). He has been a recipient of multiple federally funded grants (from AHRQ, FDA, NIH, CMMI, and NSF) and has published over 450 peer-reviewed publications.





Scott Shreeve

Scott Shreeve, MD, is Chief Executive Officer (CEO), as well as director and founder of Crossover Health. He is an emergency medicine physician who has been actively involved in the design, development, and distribution of healthcare technologies that improve the delivery of care and enhance quality of life for more than two decades. He started Crossover to focus on creating innovative primary health models that improve care delivery, health outcomes, and member experience. Under his leadership, Crossover has become a nationally recognized leader by serving clients like Apple, Facebook, Microsoft, Comcast, Amazon, and Boeing.

Prior to founding Crossover Health, Dr. Shreeve was co-founder of Medsphere Systems Corp., the first open-source electronic health record (EHR) for health systems. He drove the fulfillment of large-scale EHR implementations in community hospitals, statewide health systems, and primary care clinic networks. He is also a founding member of the Health 2.0 technology and reform movement, serving as a national spokesperson and conference advisor.

Dr. Shreeve earned his Bachelor of Science degree from Brigham Young University, Provo, Utah, graduated from the University of Utah School of Medicine in Salt Lake City, and completed his emergency medicine residency training at the University of Arizona Health Science Center in Tucson. He lives in Southern California with his wife and four children near some of the best breaks on the West Coast. Dr. Shreeve maintains a blog that covers enabling technologies to transform the delivery, financing, and outcomes of high-performance health care delivery.





Nina Singh

Nina Singh is a NYU Grossman School of Medicine medical student entering her final year. She holds a BS in biomedical engineering from USC, where she helped prototype novel medical technologies and won multiple nationally competitive research awards. She recently completed a research year identifying determinants of implementation success for remote patient monitoring (RPM), designing and testing interventions to improve RPM implementation, and scaling the resulting best practices across NYU Langone Health. Nina has co-authored 10+ peer-reviewed publications, including a *NEJM* perspective introducing digital minimalism as a promising approach for combatting clinician burnout. Moving forward, she is excited to apply to internal medicine residency and continue investigating how to use technology to help patients without burning out providers.





Christine Sinsky

Dr. Sinsky is Vice President of Professional Satisfaction at the American Medical Association. A general internist, she practiced at Medical Associates Clinic in Dubuque, Iowa for 32 years. Dr. Sinsky is a former Director for the American Board of Internal Medicine and a former Chair of the ABIM Foundation Board of Trustees. She currently serves on the National Academy of Medicine’s Action Collaborative on Clinician Well-Being.

Dr. Sinsky leads initiatives at the American Medical Association to improve opportunities for joy, purpose and meaning in work for physicians and their teams. Publications on “The Quadruple Aim”, “Joy in Practice”, “Texting while Doctoring” and “Creating a Manageable Cockpit for Clinicians” have contributed to the national conversation. She has also contributed to research regarding the prevalence, drivers and solutions to burnout among physicians and to resources for individual physicians and for health systems to improve practice efficiency and organizational culture.



Patrik Sundberg

Software Engineer, Google





Henry Ting

World-renowned cardiologist Dr. Henry Ting joined Delta Air Lines in 2021 as the global brand's SVP and Chief Health Officer – a first for a U.S. airline. In his most recent role as Mayo Clinic's enterprise Chief Value Officer, Dr. Ting provided vision and strategic leadership to enable Mayo Clinic to be the world's most trusted health care system. Dr. Ting's teams oversaw quality of care, patient safety, patient experience, and affordability.

Dr. Ting became familiar with Delta both as a long-time Medallion customer and, more recently, as a primary COVID-19 advisor who has helped shape Delta's strategies for the pandemic. From testing and air quality to vaccines and analytics, Dr. Ting has been a key voice to protect the health and safety our people and customers and help Delta emerge stronger and better prepared for the future.

Taking care of our people has always been Delta's top priority and is at the core of our values to focus holistically on our people's wellbeing. By investing our people's resilience and wellbeing, they will be better able to care for each other and deliver elevated experiences for our customers. Dr. Ting leads Delta in reimagining our approach to health and wellbeing, utilizing new technologies, artificial intelligence, advanced analytics, and innovative partnerships.

In addition to his role at Delta, Dr. Ting serves as Adjunct Professor of Medicine at Emory University and Professor Emeritus at Mayo Clinic. He currently serves on National Advisory Committee for Agency for Healthcare Research and Quality (AHRQ) and the Board of Directors for National Quality Forum (NQF). Dr. Ting's academic focus includes health services research and implementation science. He has lectured worldwide and authored over 200 journal articles, book chapters and publications. Dr. Ting received his bachelor's degree in chemistry from Cornell University and doctorate of medicine from Harvard Medical School. He completed a master's degree in Business Administration from University of St. Thomas, and health care executive certification from Harvard Business School.





Kevin Volpp

Dr. Volpp is the founding Director of the Penn Center for Health Incentives and Behavioral Economics (CHIBE) and the Mark V. Pauly President's Distinguished Professor at the Perelman School of Medicine and the Wharton School of the University of Pennsylvania. He has led CHIBE since its inception turning it into an entity which became 1 of 2 original NIH Centers on behavioral economics and health and that involves more than 90 faculty members and trainees. Dr. Volpp's work focuses on developing and testing innovative ways of applying insights from behavioral economics in improving patient health behavior and increasing health system value by influencing provider performance. Dr. Volpp oversaw the creation of the world's first health system Nudge Unit at Penn Medicine. He has published more than 300 articles, book chapters, and commentaries. His work has served as the foundation for benefit design initiatives using financial incentives for smoking cessation used by many large employers including GE and CVS, a prescription refill synchronization program for Humana members, a redesign of a primary care physician payment for clinicians across Hawaii, a simple health insurance plan called "Humana Simplicity", and an 'enhanced active choice' approach used among tens of millions of CVS members to increase the ease of receiving automated medication refills. He now leads the American Heart Association Rockefeller Foundation Food is Medicine Initiative, a major research program designed to build evidence on effectiveness and cost effectiveness of programs to improve health through better access to nutritious food. Dr. Volpp's work has been recognized by the Matilda White Riley Award by the Office of Social and Behavioral Science at NIH, the John Eisenberg Award from the Society of General Internal Medicine, the American College of Physicians Behavioral Medicine Award, the Association for Clinical and Translational Science Distinguished Investigator Award for Clinical and Translational Science, the American Heart Association Distinguished Scientist Award (November 2022), and article-of-the-year awards by numerous professional societies. He has served as a mentor for dozens of individuals who have emerged as national leaders in academia, private, and public sector organizations. Dr. Volpp trained in Medicine and Economics at the University of Pennsylvania School of Medicine and the Wharton School before completing a residency in internal medicine at Brigham and Women's Hospital. He was a practicing primary care physician and hospitalist for 20 years at the Philadelphia Veterans Affairs Medical Center. Volpp is an elected member of the National Academy of Medicine and an editorial board member of NEJM Catalyst.





Heidi Wald

In September 2022, Dr. Wald was named the Chief Quality and Safety Officer at Intermountain Healthcare, having served in the same role at SCL Health since January 2019. She is responsible for supporting the operational quality and safety work across three markets, including 33 hospitals and greater than 400 ambulatory sites in an enterprise-wide approach.

At SCL Health, Dr Wald directed the operational quality and safety teams and clinical performance improvement efforts. Special projects included a Just Culture operational implementation and COVID Medical Branch leadership. Prior to joining SCL Health, Dr. Wald was an Associate Professor of Medicine in the Division of Health Care Policy Research at the University of Colorado (CU) School of Medicine where she was a faculty member between 2007 and 2018. She has authored over 60 peer reviewed articles on patient safety and quality of the older adult population in hospitals and nursing homes. She served as the Department of Medicine's Vice Chair for Quality from 2011-2016.

Dr. Wald is a graduate of Harvard Medical School and completed her residency in Internal Medicine at the Hospital of the University of Pennsylvania. She completed a fellowship in Geriatric Medicine, a NRSA Primary Care Research Fellowship, and an MSPH at the University of Colorado Denver. Dr. Wald was a 2009 Atlantic Philanthropies Health and Aging Policy Fellow. She is board certified in Internal Medicine and Geriatric Medicine.

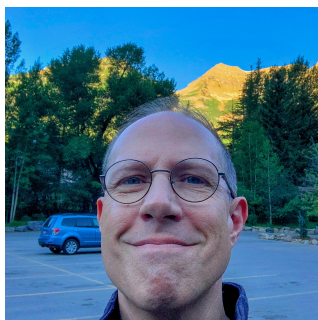




Vindell Washington

Vindell Washington, MD, MS, is the Chief Clinical Officer for Care and Director of Health Equity Center of Excellence at Verily. In this role, he will help integrate Verily's research and care products, with a focus on Onduo and care delivery, and will lead Verily's new center of excellence for health equity. Vindell previously served as Chief Medical Officer and EVP at Blue Cross Blue Shield of Louisiana where he oversaw network operations and contracting, medical policy and quality, disease management, and pharmacy benefits. Prior to that, he was National Coordinator for Health Information Technology (ONC), where he provided high-level executive direction and leadership for ONC programs, operations, and policies. Vindell received his medical degree from the University of Virginia and his MS in healthcare management from the Harvard University School of Public Health.





Jon White

Dr. Jon White is a Professor of Medicine at the University of Utah and conducts translational research funded by NIH, FDA, VA, and the Robert Wood Johnson Foundation. Dr. White is also the Associate Chief of Staff for Research and Development at the Veterans Affairs Salt Lake City Health Care System where he leads a top five VA research service of investigators improving the health of Veterans and the nation through scientific discovery and knowledge translation.

Before this, Dr. White was the Deputy National Coordinator for Health Information Technology in the US Department of Health and Human Services where he provided executive direction and leadership for national health IT programs and policies. He led mission-critical activities, including the publication of federal regulations, congressional reports, and the All Of Us precision medicine initiative.

From 2007-2014, Dr. White was Director of the Division of Health IT at the Agency for Healthcare Research and Quality (AHRQ). At AHRQ, he funded hundreds of projects in 48 states, including research, demonstration and implementation projects on a wide variety of health IT applications and issues. Dr. White worked with federal partners such as the Centers for Medicare & Medicaid Services and the National Institutes of Health as well as key stakeholders to implement major health care initiatives.

Dr. White trained in family medicine at the University of Virginia and Lancaster General Hospital in Pennsylvania. He is a recipient of the national AAFP Award for Excellence in Graduate Education.





John Wong

Dr. John Eu-Li Wong is the Isabel Chan Professor in Medical Sciences; Executive Director, Centre for Population Health, National University of Singapore (NUS), and Senior Advisor, National University Health System (NUHS) Singapore. A medical oncologist-haematologist, Professor Wong obtained his medical degree from NUS and did his residency both in Singapore and in the United States, along with his fellowship at the New York Hospital-Cornell Medical Center, where he was the Chief Resident in Medicine, and Memorial Sloan-Kettering Cancer Center.

He currently co-chairs a multisectoral public, social, and private sector initiative to work with residents in a location based, real-world township, to co-develop programs that are effective, scalable and sustainable to increase healthy longevity, enable purposeful longevity, promote intergenerational bonding and support a community for all ages to allow ageing in place. He previously served as Senior Vice President (Health Innovation and Translation), NUS; Chief Executive, NUHS; Director, National University Cancer Institute; and Dean, Yong Loo Lin School of Medicine, NUS.

He is Co-Chair of the US National Academy of Medicine Commission for a Global Roadmap for Healthy Longevity; Commissioner, Lancet Commission on 21st Century Global Health Threats; Member, Advisory Committee, Harvard University's T.H. Chan School of Public Health, The Culinary Institute of America, and the Association Montessori Internationale on Healthy Aging, Diet and Lifestyle; Council Member, M8 Alliance of Academic Health Centers; founding Member, Association of Academic Health Centers – International; and currently sits on the Editorial Board, Journal of the American Medical Association, and the Board of Governors of Sidra Medicine. He received an honorary Degree of Doctor Philosophiae Honoris Causa from the Hebrew University of Jerusalem, is an international member of the US National Academy of Medicine, and an elected member of Academia Europaea. He is a Fellow of the Academy of Medicine Singapore, the Royal College of Physicians in Edinburgh and London, and the American College of Physicians.





Clyde Yancy

Clyde W. Yancy, MD, MSc is Vice Dean for Diversity, Equity and Inclusion; Magerstadt Endowed Professor & Chief of Cardiology; and Professor, Department of Medical Social Science, at Northwestern University Feinberg School of Medicine, Chicago, IL.

He serves as Associate Director, Bluhm Cardiovascular Institute, Northwestern Medicine, Chicago, IL. Dr. Yancy is Deputy Editor for JAMA - Cardiology, a former President of the American Heart Association, and holds extensive government service including leadership positions in the National Institutes of Health, the Food and Drug Administration, and the Department of Health and Human Services.

His research addresses heart failure, heart transplantation, outcomes sciences and health disparities. He has published more than 700 peer-reviewed manuscripts, and is annually cited as one of the top 1% scientific authors, worldwide. He holds innumerable awards as a healthcare leader, top physician, teacher and mentor in cardiology. He is an elected member of the National Academy of Medicine, Association of American Physicians and the Association of University Cardiologists.





Khay Guan Yeoh

Professor Yeoh is Chief Executive of the National University Health System. He is also concurrently the Kishore Mahbubani Professor in Medicine and Health Policy and Senior Vice President (Health Affairs), National University of Singapore. He practices as a Senior Consultant at the Department of Gastroenterology and Hepatology, National University Hospital (NUH). He served as Dean of NUS School of Medicine from 2011 to 2018.

Prof Yeoh received his MBBS (Bachelor of Medicine, Bachelor of Surgery) from NUS in 1987. He trained in internal medicine and gastroenterology at NUH. He is a Fellow of the Academy of Medicine, Singapore, Fellow of the Royal College of Physicians of London and Glasgow, and a member of the American Gastroenterology Association and American Society of Gastrointestinal Endoscopy. He has received several awards, including the Nishi-Takahashi Lectureship at the 9th International Gastric Cancer Conference in 2011, the National Medical Excellence Award as Outstanding Clinician Scientist from the Ministry of Health in 2013, and the Public Administration Medal (Gold) in 2022 for his contributions to medical education and healthcare in Singapore.



Sundance Map: Redford Center

